

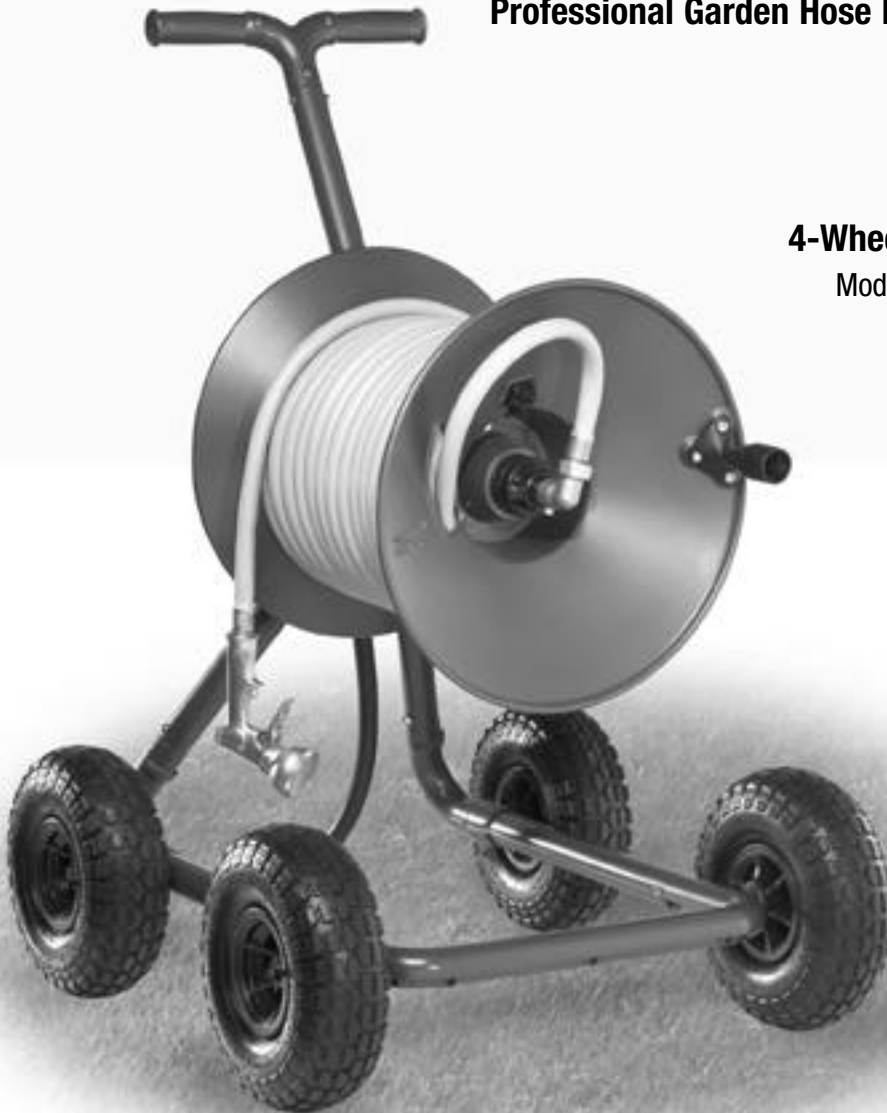
**RapidReel®**

# **TRITON**

**Professional Garden Hose Reels**

**4-Wheel Wagon Reel**

Model GH168-WG



**Assembly Instructions**

RapidReel®  
**TRITON**

**THANK YOU** for  
 your purchase.

**WARRANTY  
 REGISTRATION**

Please take a few  
 moments to secure your  
 10 year warranty by registering online.

**[www.rapidreel.com/pr.aspx](http://www.rapidreel.com/pr.aspx)**

**No Leak**



**10 YEAR  
 GUARANTEE**

**Questions? Problems? Missing Parts?**



**DO NOT** contact or return  
 this item to the retailer.

Seek factory assistance using the  
 information below.

**1-866-523-2363**

**(toll free) MON- FRI, 8AM to 5PM (CST)**

E-mail: [customerservice@rapidreel.com](mailto:customerservice@rapidreel.com)

MON- FRI, 8AM to 5PM (CST)

Online: [www.rapidreel.com](http://www.rapidreel.com)

24/7/365

**Contents**

Version 0207

**10 Year Warranty**

**Coverage**

Rapid-Reel® and Reel Quick, Inc. (collectively here after referred to as the "warrantor"), guarantees this hose reel, components and parts, unless otherwise specified, to be free from defect, malfunction or failure in material, or workmanship, under normal use and service, for a period of 10 years (240 months). Warranty period starts from original invoice date.

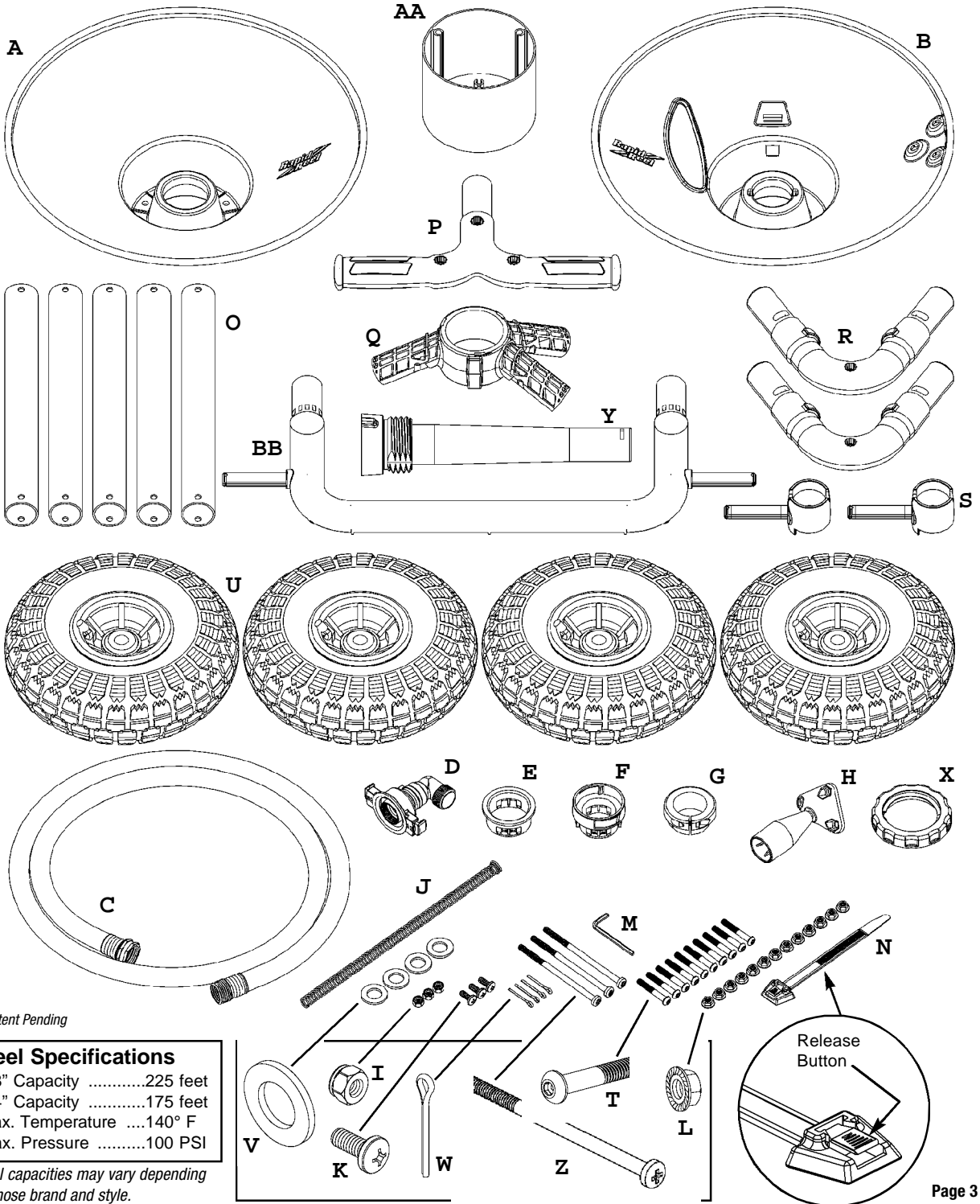
**Hose**

Hose supplied by warrantor carries a warranty of sixty (60) days from original invoice date of purchase. Hose is selected from reliable commercial sources and is recommended for application on the basis of data supplied by the manufacturer.

**Exemptions**

Warranty does not cover leaking due to damage caused by the use of acid, harsh chemicals or mineral deposits. Warranty does not apply when products are used in excess of their rated capacities and design functions or under abnormal conditions. The effects of corrosion, and normal wear and tear are specifically excluded from this warranty. This warranty does not cover damage which occurs in shipment or failures which are caused by products not supplied by the warrantor or failures which result from accidents, mishandling, faulty installation, freezing, misuse or misapplication, abuse or neglect. Warranty is void if the product or any part thereof has been tampered with, altered or repaired by anyone other than warrantor or damage that is attributable to acts of God. The warrantor covers the replacement or credit of defective parts only and does not allow for field labor charges for removal, installation, analysis or travel expenses. In no event shall the warrantor or its suppliers be liable for any damages, whatsoever, arising out of the use of or inability to use this product. (Some states do not allow the exclusion of limitation of incidental or consequential damages, so the above limitation or exclusion may not apply to you). The warrantor and its suppliers disclaim all other expressed or implied warranties. Some states do not allow limitations on how long an implied warranty lasts, so the above limitation may not apply to you. This warranty gives you specific legal rights, and you may also have other rights which vary from state to state.

Ref.	Part #	Qty.	Description
A	0.4501.026	1	Back Flange
B	0.4501.025	1	Front Flange
C	0.4301.130	1	Inlet Hose
D	0.2005.018	1	Swivel
E	0.4202.037	1	Back Bushing
F	0.4202.036	1	Front Bushing
G	0.5001.166	1	Adjustable Brake
H	0.5001.165	1	Crank Handle
I	0.4102.014	3	Nylon Insert Nut
J	0.4209.019	1	Kink-Free Spring
K	0.4101.056	3	5/8" Phillips Screw
L	0.4102.017	13	1/4" Serrated Nut
M	0.4209.018	1	Hex Key
N	0.4202.032	1	Hose Strap
O	0.4501.030	5	Frame Tube
P	0.5001.215	1	T-Handle
Q	0.4501.032	1	Frame Wye
R	0.5001.216	2	Elbow Assembly
S	0.4501.034	2	Tire Spindle
T	0.4101.066	10	1-3/4" Tube Screw
U	0.4202.051	4	Tire
V	0.4103.015	4	Tire Washer
W	0.4104.002	4	Cotter Pin
X	0.4202.040	1	Axle Lock Nut
Y	0.4501.041	1	WG Axle
Z	0.4101.065	3	4-3/4" Drum Screw
AA	0.4501.042	1	Drum Spacer
BB	0.4501.043	1	WG Front Bumper



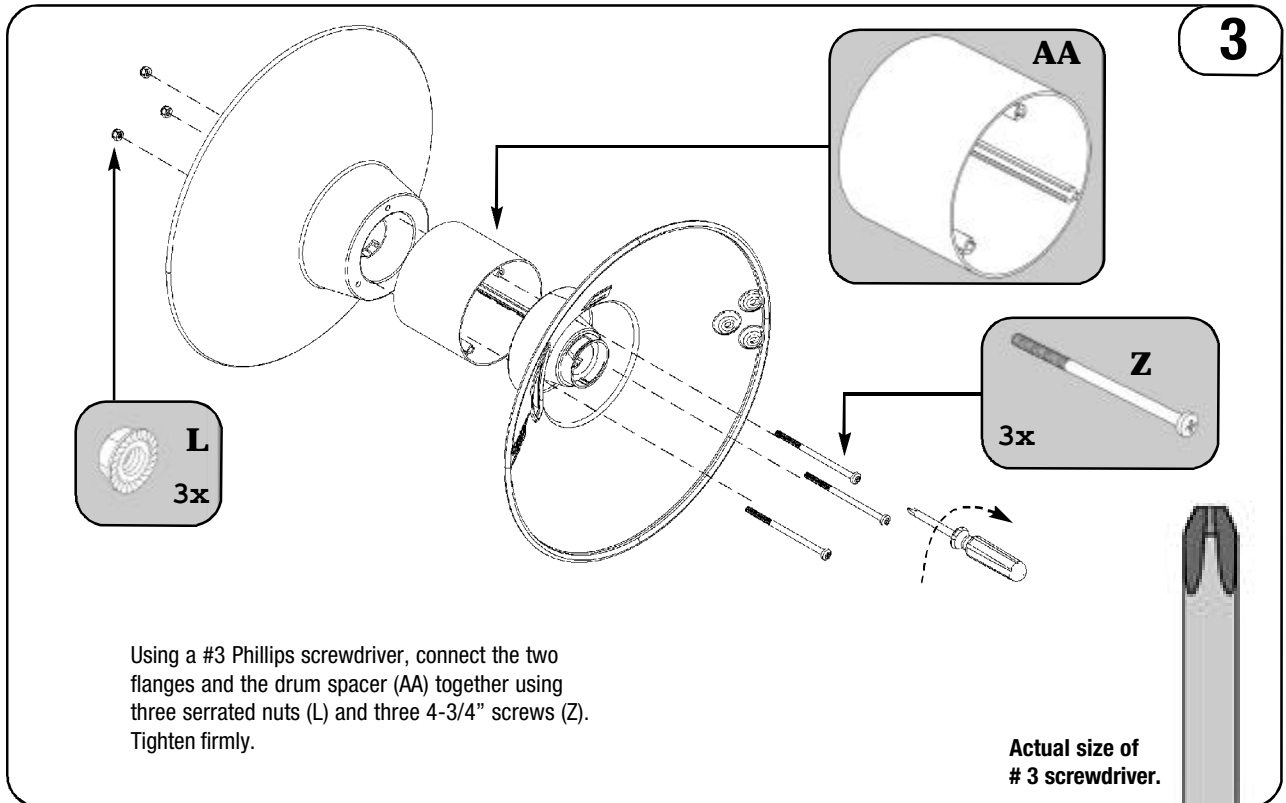
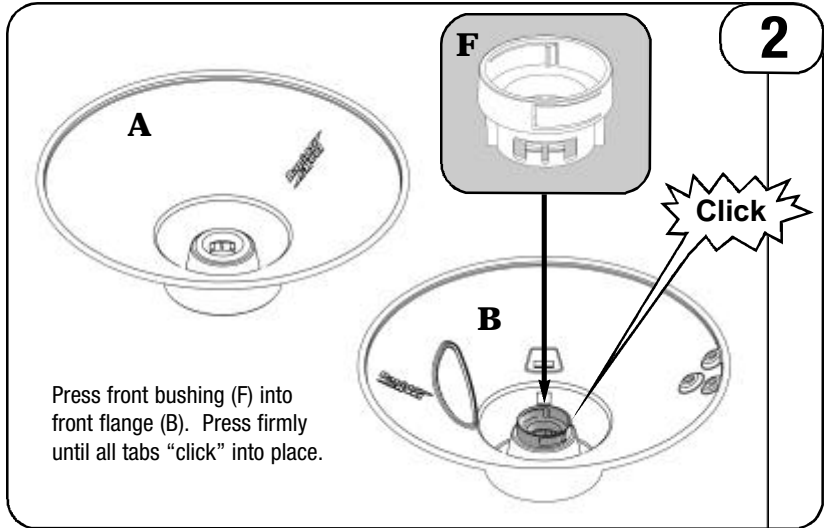
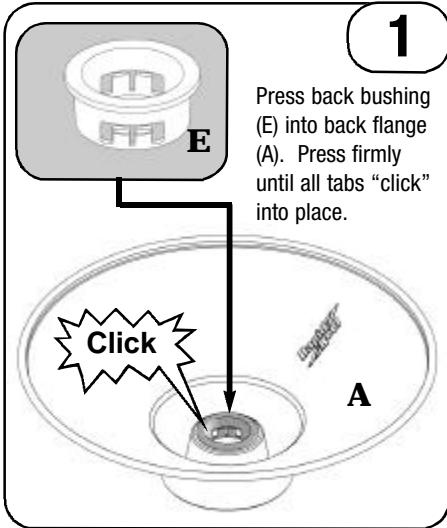
Patent Pending

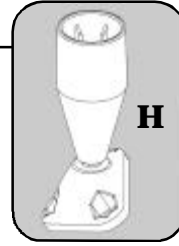
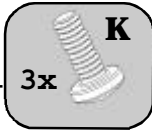
### Reel Specifications

5/8" Capacity .....	225 feet
3/4" Capacity .....	175 feet
Max. Temperature .....	140° F
Max. Pressure .....	100 PSI

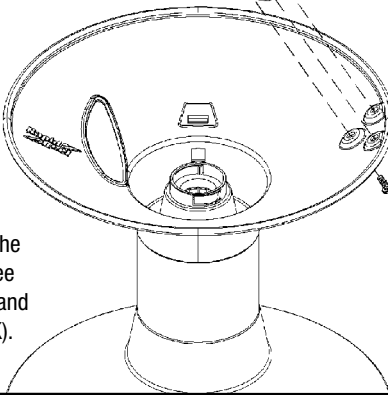
Reel capacities may vary depending on hose brand and style.

# Reel & Frame Assembly



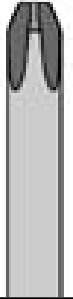
**4****I**  
3x**H**3x **K**

Using a #3 Phillips screwdriver, attach the handle (H) using three nylon insert nuts (I) and three 5/8" screws (K).

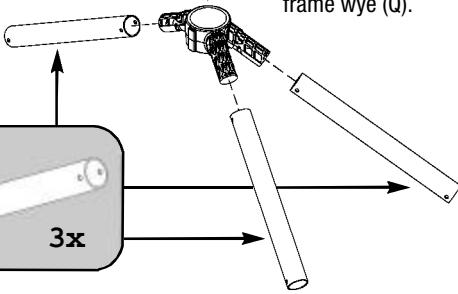
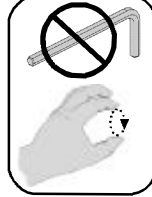


Tighten firmly as the nylon insert nuts will require extra force.

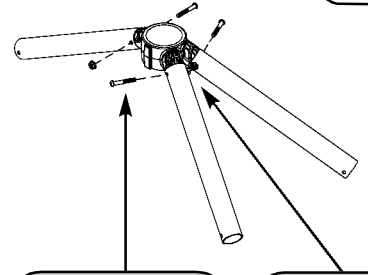
Actual size of #3 screwdriver.

**5****Q**

Slide three frame tubes (O) onto the frame wye (Q).

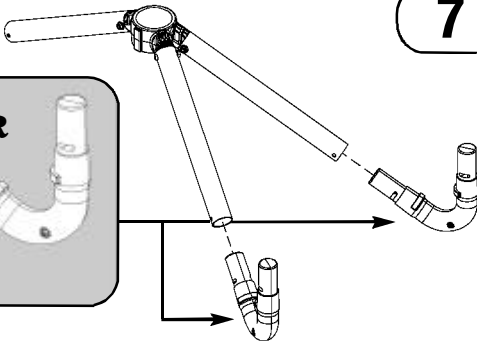
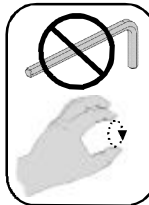
**O**  
3x**6**

Secure the frame tubes to the frame wye using three 1-3/4" screws (T) and three serrated nuts (L). For now, hand tighten only.

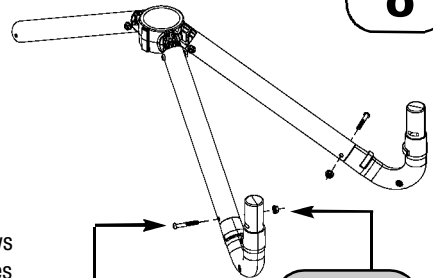
**T**  
2x**L**  
2x**7****R**

2x

Slide the two elbow assemblies (R) into the frame tubes.

**8**

Secure the elbows to the frame tubes using two 1-3/4" screws (T) and two serrated nuts (L). For now, hand tighten only.

**T**  
2x**L**  
2x

**9**

Be sure to take note of proper positioning of spindle notches.

Slide the two tire spindles (S) onto the elbow assemblies.

**10**

Slide two frame tubes (O) onto the elbow and into the tire spindles and align holes.

**11**

Attach the elbow, spindle and tube together using serrated nuts (L) and 1-3/4" screws (T) For now, hand tighten only.

**NOTE:** These two serrated nuts (L) must be placed into the spindle notches hex side first.

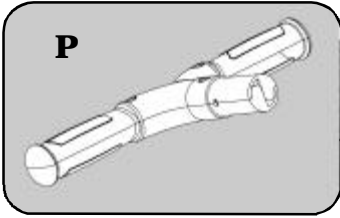
**12**

Slide the front bumper (BB) into the frame tubes.

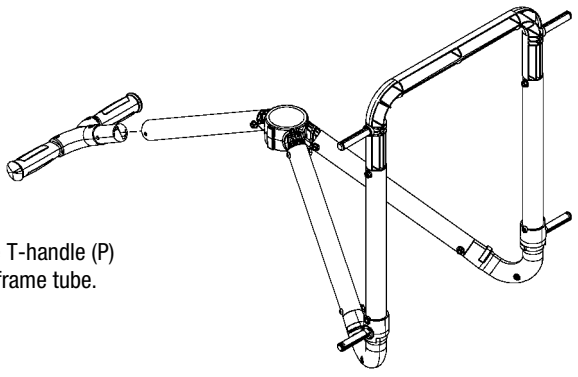
**13**

Secure the bumper to frame tubes using two 1-3/4" screws (T) and two serrated nut (L). For now, hand tighten only.

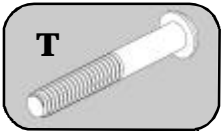
14



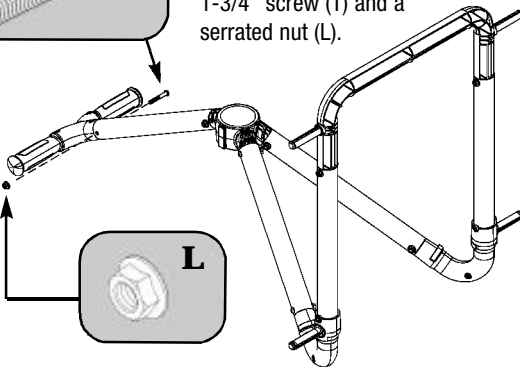
Slide the T-handle (P) into the frame tube.



15



Secure the T-handle to the frame tube using a 1-3/4" screw (T) and a serrated nut (L).

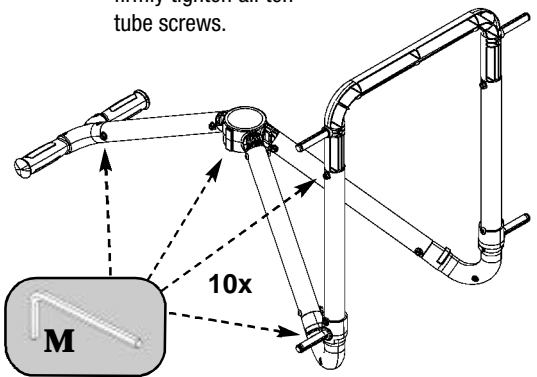


16

Using the hex key (M), firmly tighten all ten tube screws.

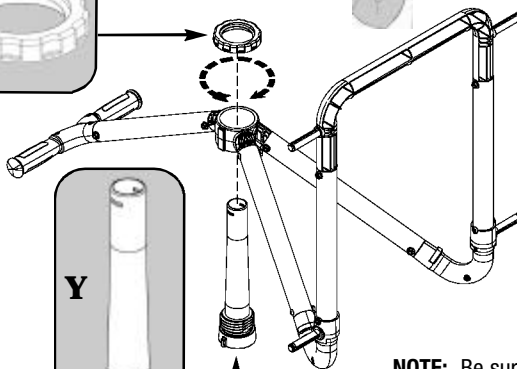
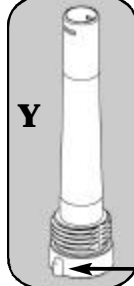


10x



17

Attach the axle (Y) to the frame wye using the axle lock nut (X). Hand tighten **FIRMLY**.



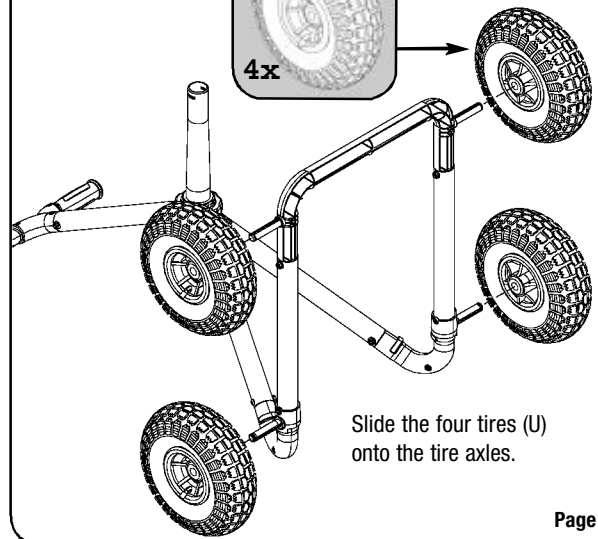
**NOTE:** Be sure to align the stub on the axle with the notch in the frame wye.



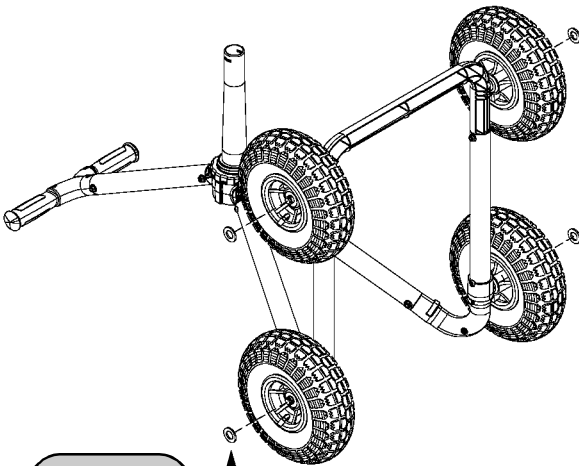
18



4x



Slide the four tires (U) onto the tire axles.

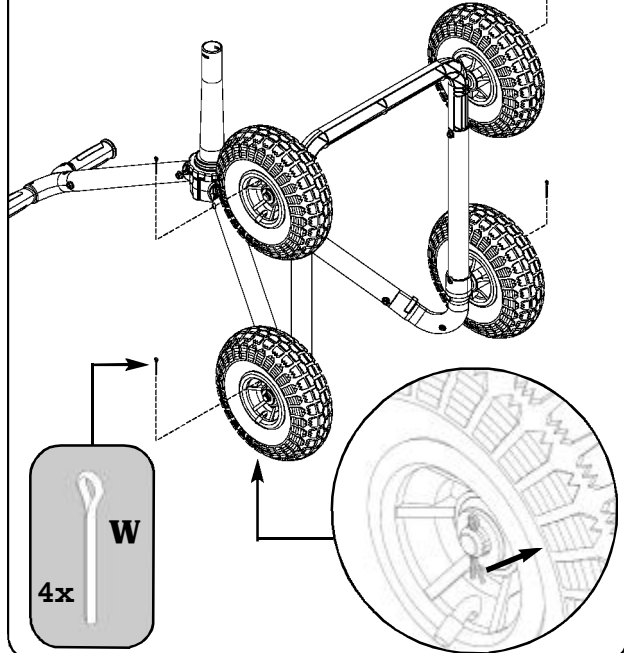
**19**

Place the four tire washers (V) onto the tire axles.

4x

**20**

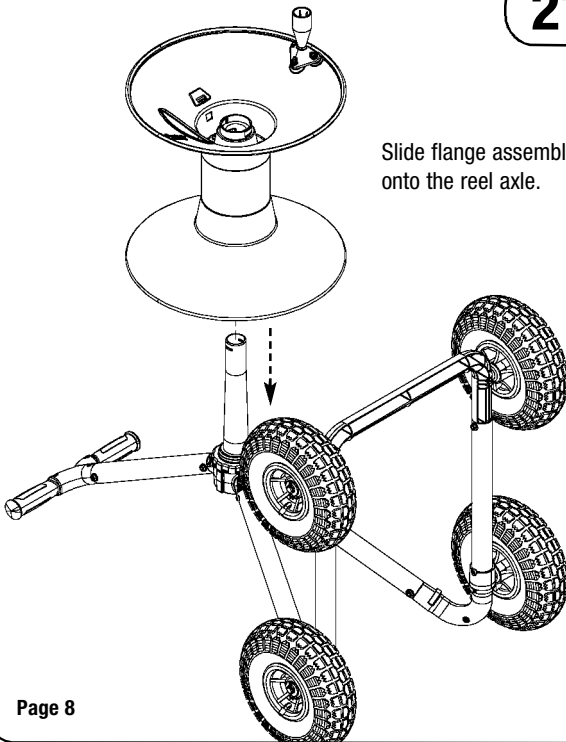
Insert the four cotter pins (W) through the holes in the tire axles. Then spread the pins.



4x

**21**

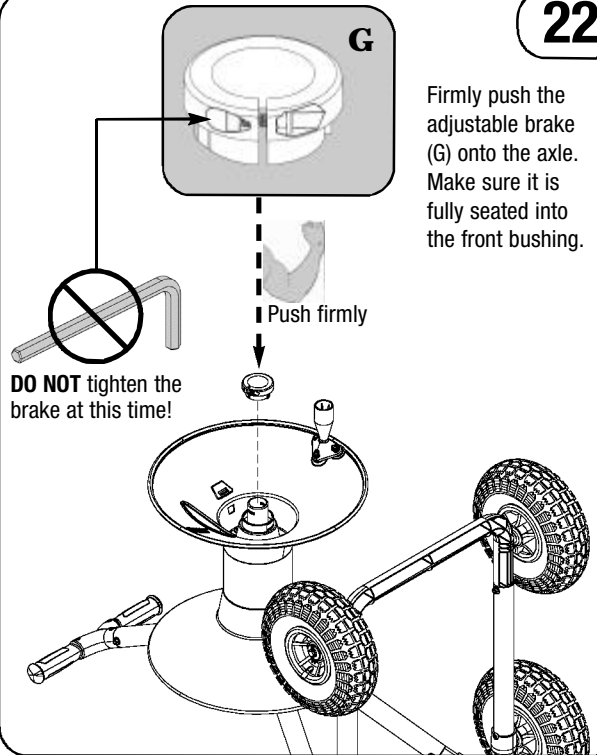
Slide flange assembly onto the reel axle.



Page 8

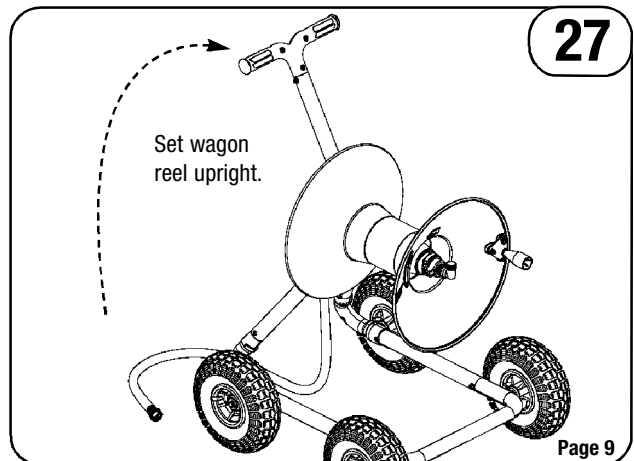
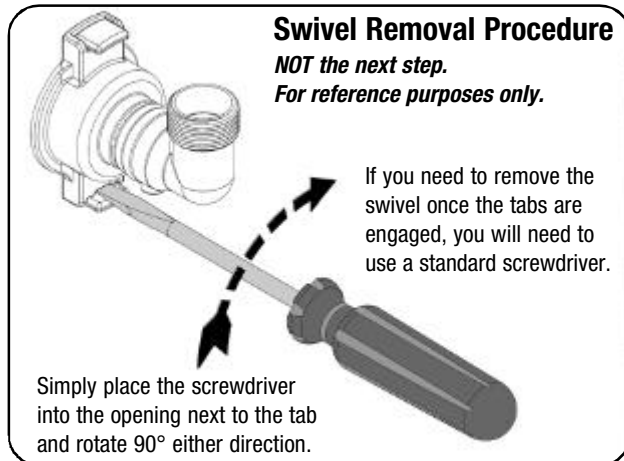
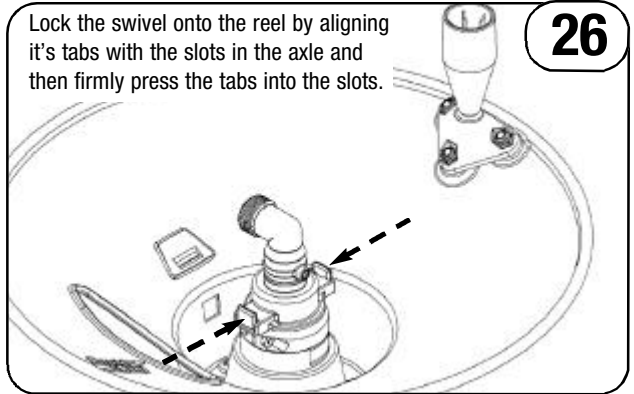
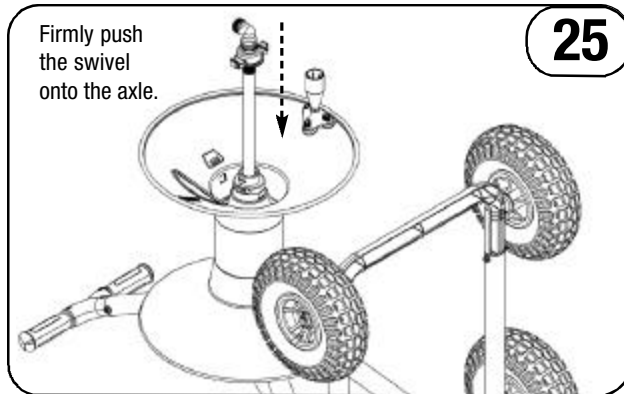
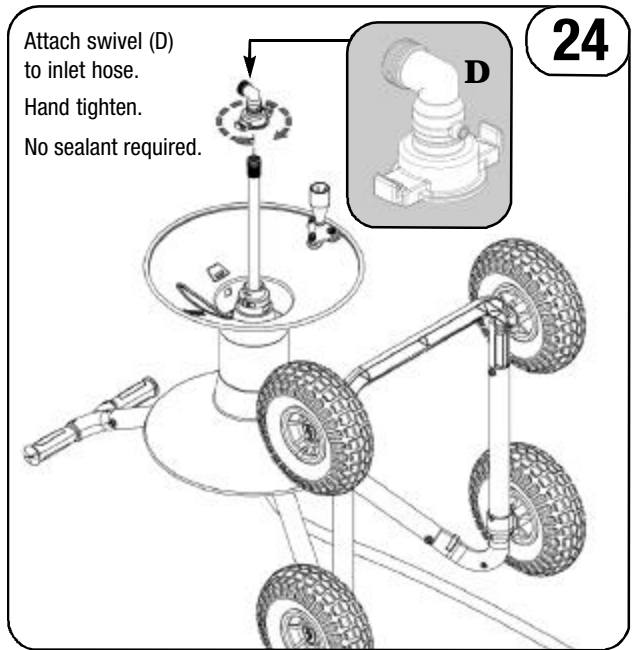
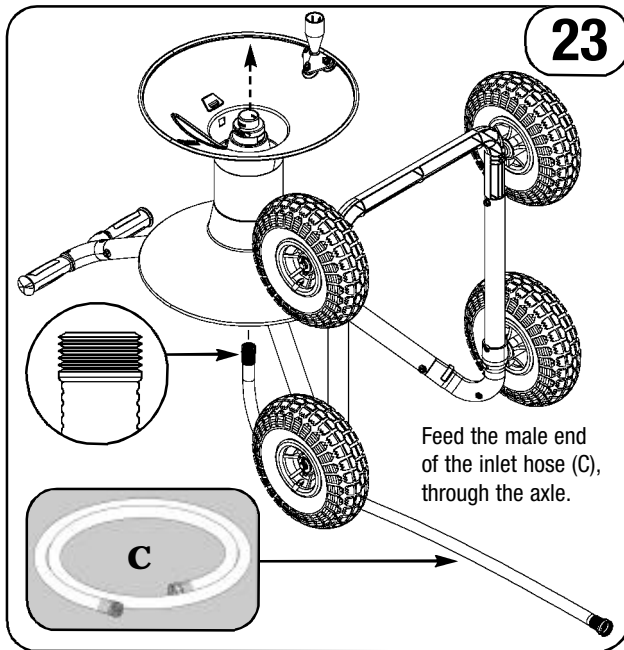
**22**

Firmly push the adjustable brake (G) onto the axle. Make sure it is fully seated into the front bushing.



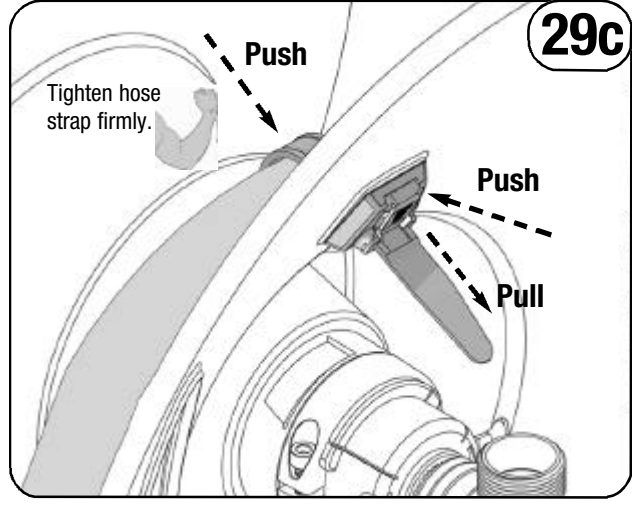
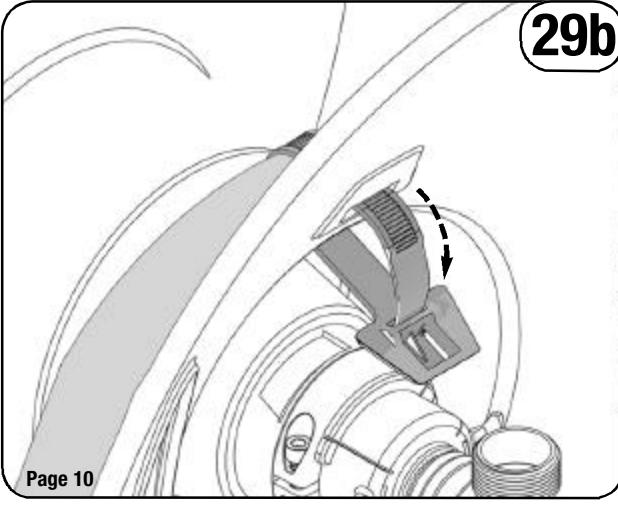
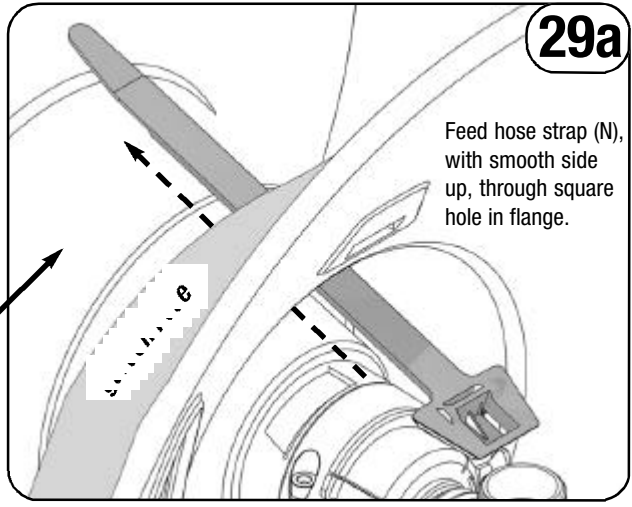
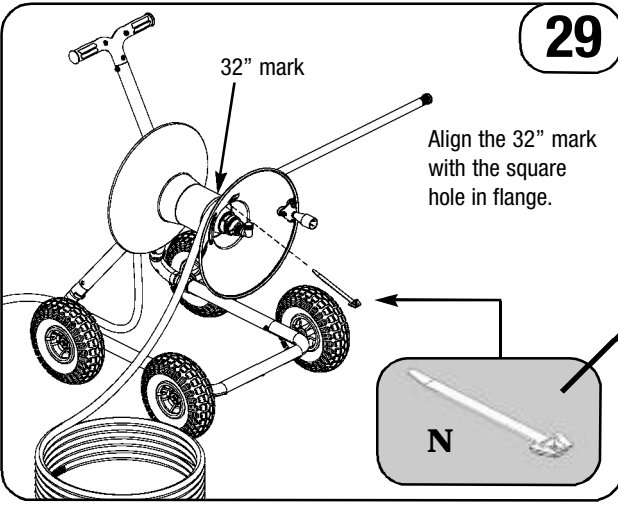
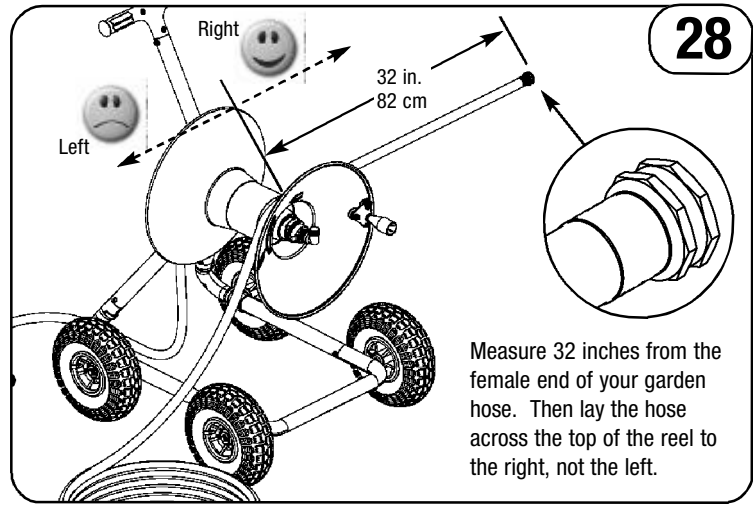
**DO NOT** tighten the brake at this time!

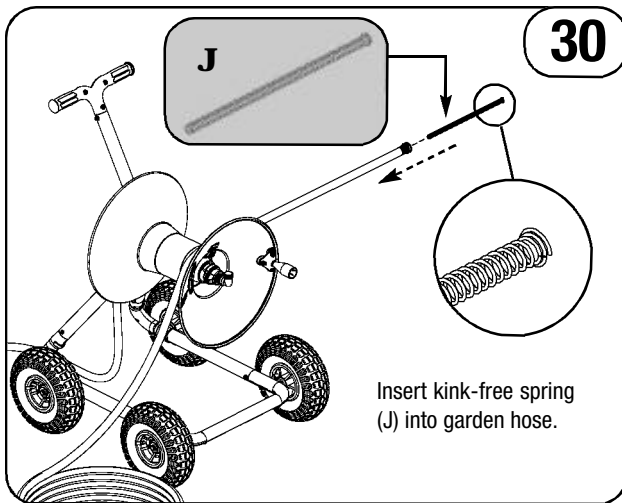
Push firmly



RapidReel®  
**TRITON**

**HOSE  
ATTACHMENT**

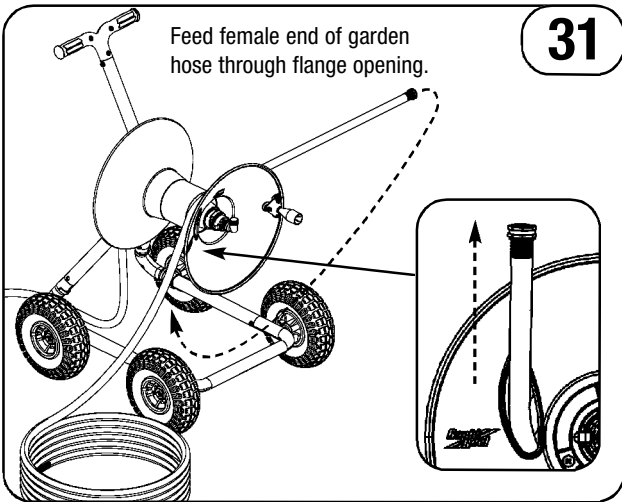




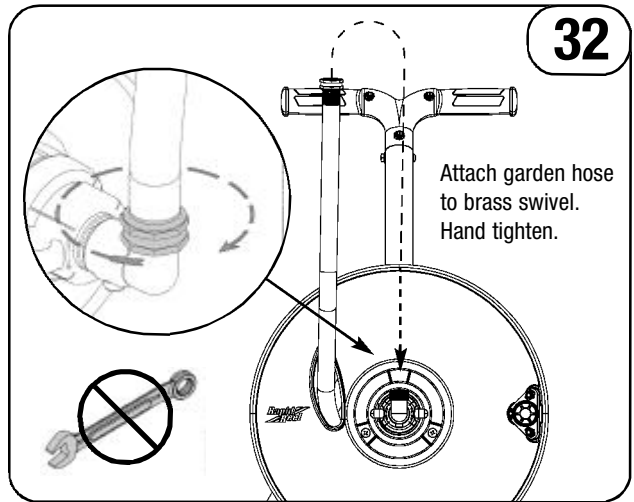
Insert kink-free spring (J) into garden hose.

**NOTE:**

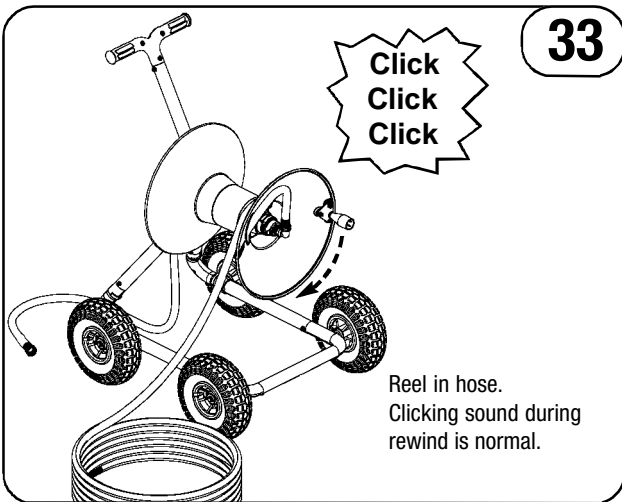
The Kink-Free Spring (J) is designed to prevent a hose kink during STEP 32. Rapid Reel currently supplies this one spring size which will fit into most 5/8" garden hoses. However, it may not fit into certain brands, such as Craftsman® hoses. Use of the spring is not required and TRITON reels are designed to operate properly without it. If the spring does not fit into your garden hose, simply use care during STEP 32 to avoid a hose kink. If you are going to purchase a new garden hose for the reel, we recommend that you take the spring with you while shopping to ensure it will slide into the hose.



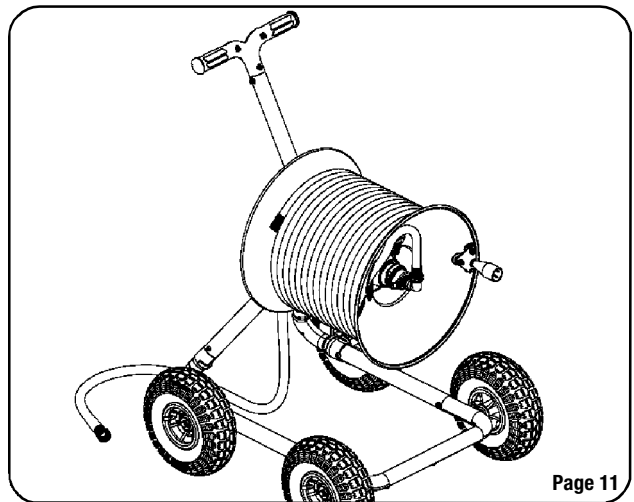
Feed female end of garden hose through flange opening.



Attach garden hose to brass swivel.  
Hand tighten.



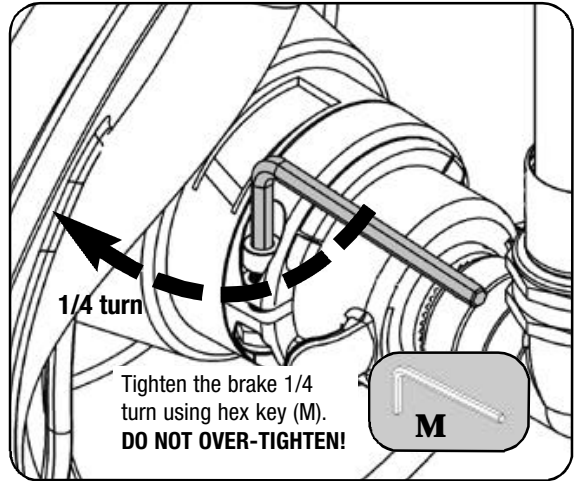
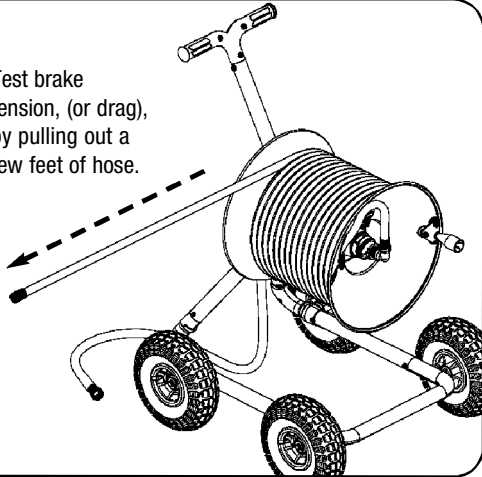
Reel in hose.  
Clicking sound during rewind is normal.



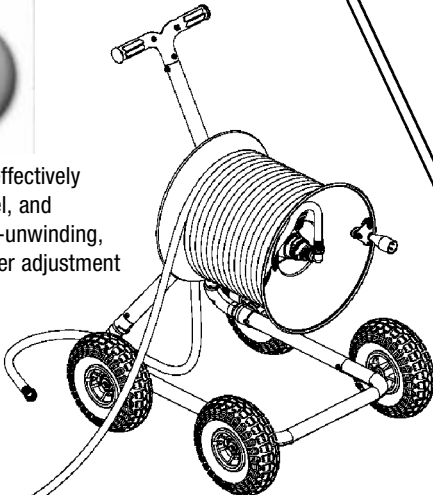
RapidReel®  
**TRITON**

# Brake Adjustment

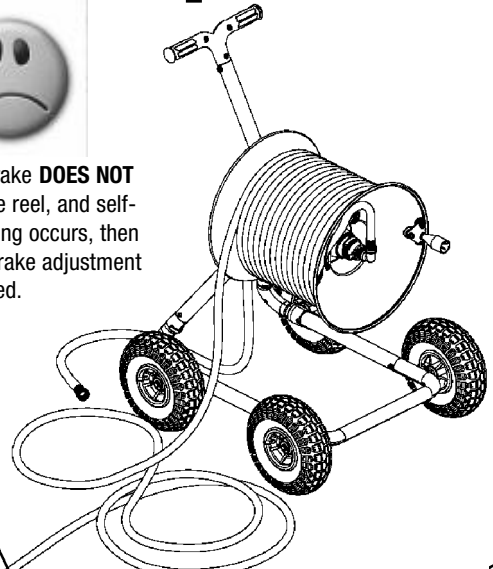
Test brake tension, (or drag), by pulling out a few feet of hose.



If the brake effectively slows the reel, and prevents self-unwinding, then no further adjustment is needed.



If the brake **DOES NOT** slow the reel, and self-unwinding occurs, then some brake adjustment is needed.



**Congratulations! Assembly and installation are complete. Enjoy your hose reel.**